

COMPANY PRESENTATION

www.geniczech.cz

We are a Zlín-based engineering company with global impact

On the market **since 1993**.

Production of complex machined parts according to drawing documentation.

Assembly of functional units and complete machines.

In numbers

90

employees

7

**million EUR
annual
turnover**

500

**thousand sorts of
manufactured
parts**

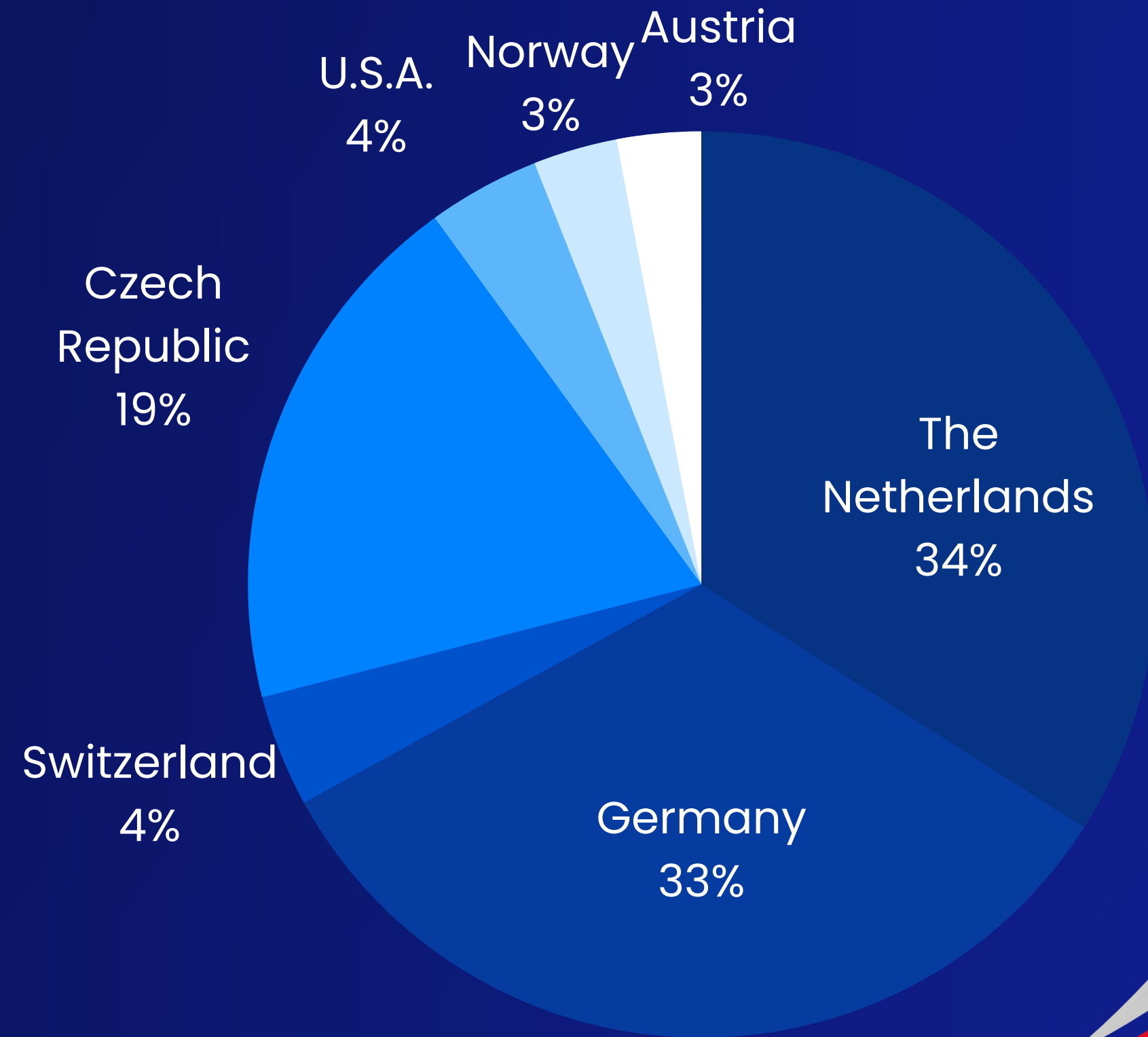
30

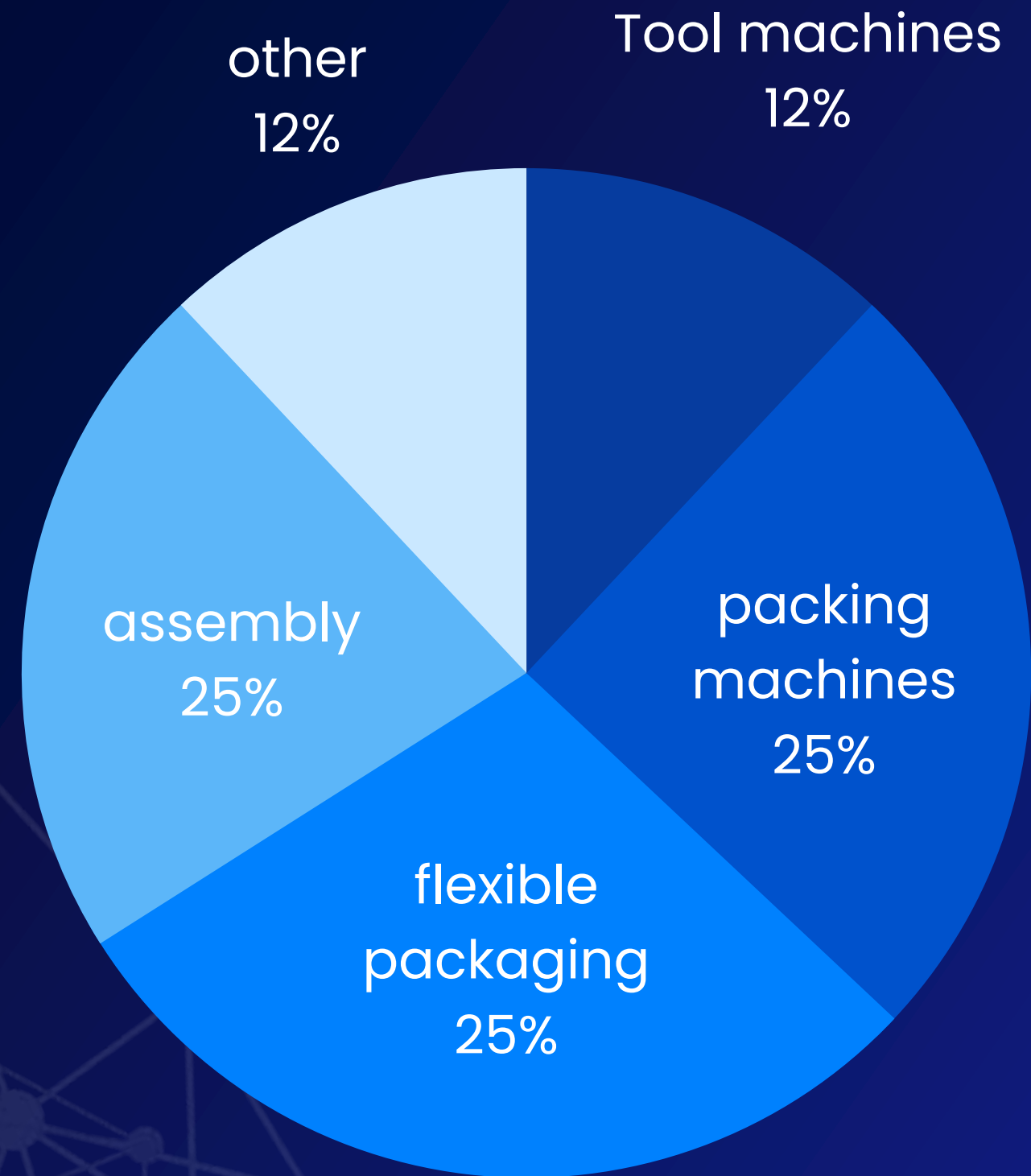
**years of
experience**

Export is our domain

We export 80% of our production abroad, mainly across Europe.

Other countries: England, China, Italy, Slovakia, Hungary, Croatia, Israel, South African Republic





Target industries of our customers

We have long cooperated with **4 main customers** from different industries.

These superior relationships guarantee our **stability and credibility** in the international engineering market.

Top technologies of world-famous brands

For production, we rely on our 30 years of experience in state-of-the-art machining as well as on CNC machines of the highest quality, including world-known brands such as DMG, GROB, HAAS, and others.

12

**CNC
milling
machines**

5

**5-axis
CNC machines**

6

CNC lathes

DMC 90U WITH PALLET



DMU 60

GENICZECHOM
PRECISION ENGINEERING



DMG MORI NLX

GENICZECHOM
PRECISION ENGINEERING



We use the Helios Nehrite **ERP system** that supports technology, inventory management, sales, production planning, and production management.

The implemented **MES system** allows our accurate monitoring of machine productivity and the running production orders online, as well as paperless display of production documentation. The deployment of this system is our first step towards **Industry 4.0**.

We also use the **Edge CAM** system, and we introduced **EDI** (electronic data exchange) between the Jaggaer customer portal and our Helios ERP system at the end of 2022.

**Software
support**

Our strong points

1

Repeated
small-series
production
of over
10 pieces

2

Production of
complex parts,
especially on
5-axis
machines

3

Assembly of
machines
and modules

4

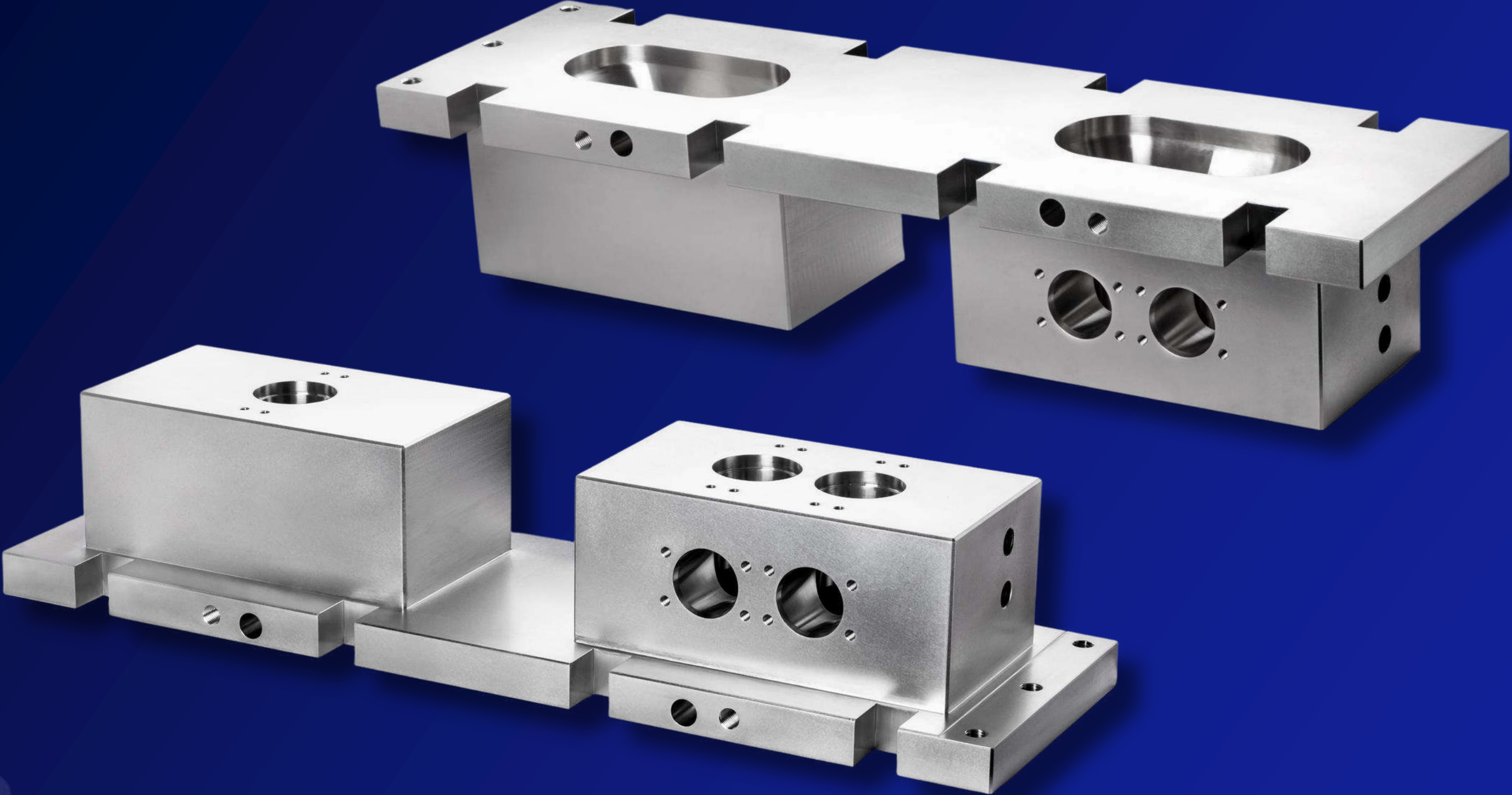
30 years of
experience
and
innovations

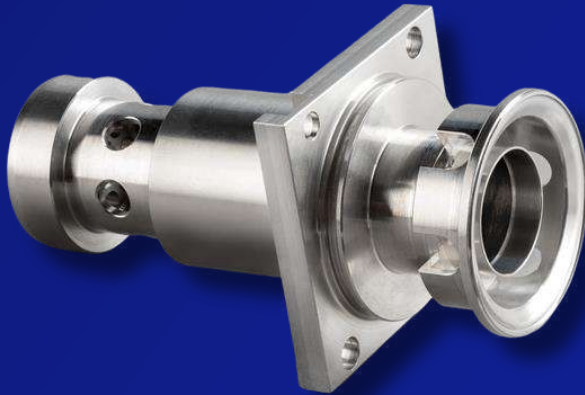
**An example
of our
produce**

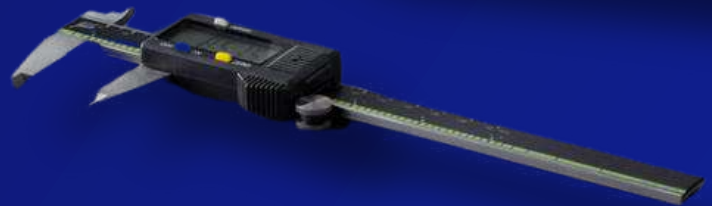


GENICZECH M
PRECISION ENGINEERING

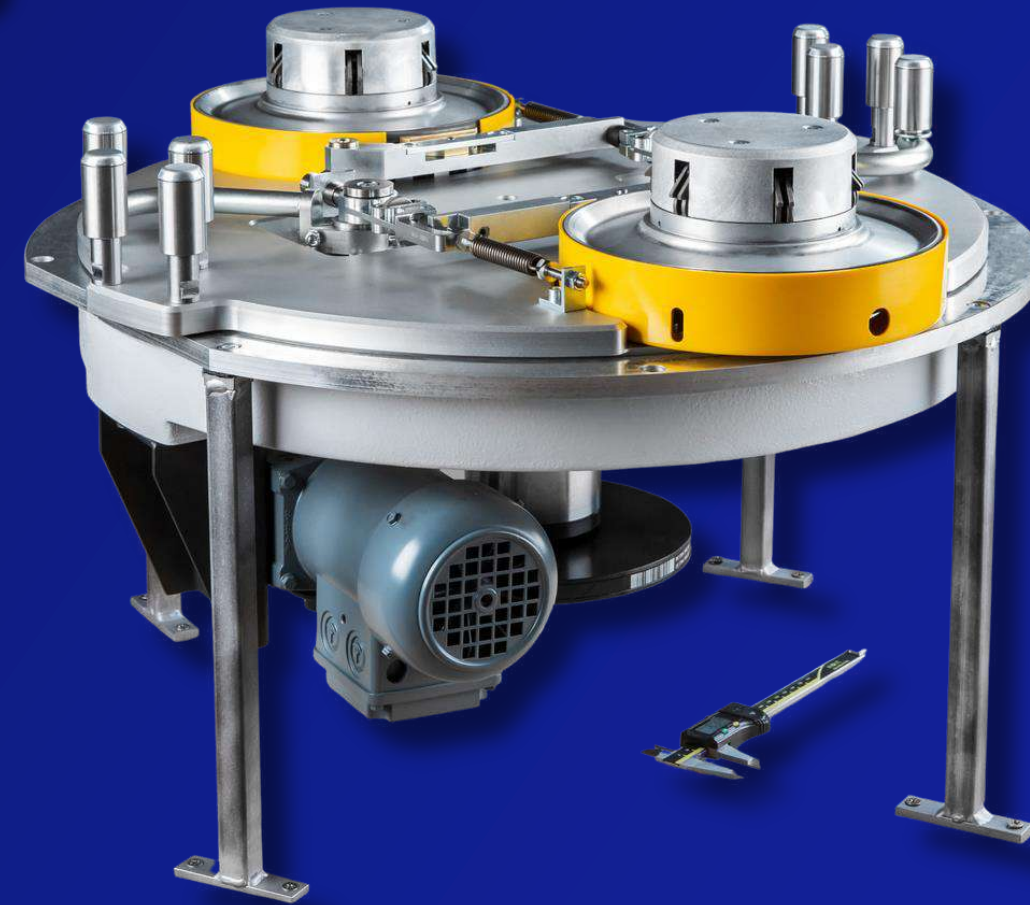
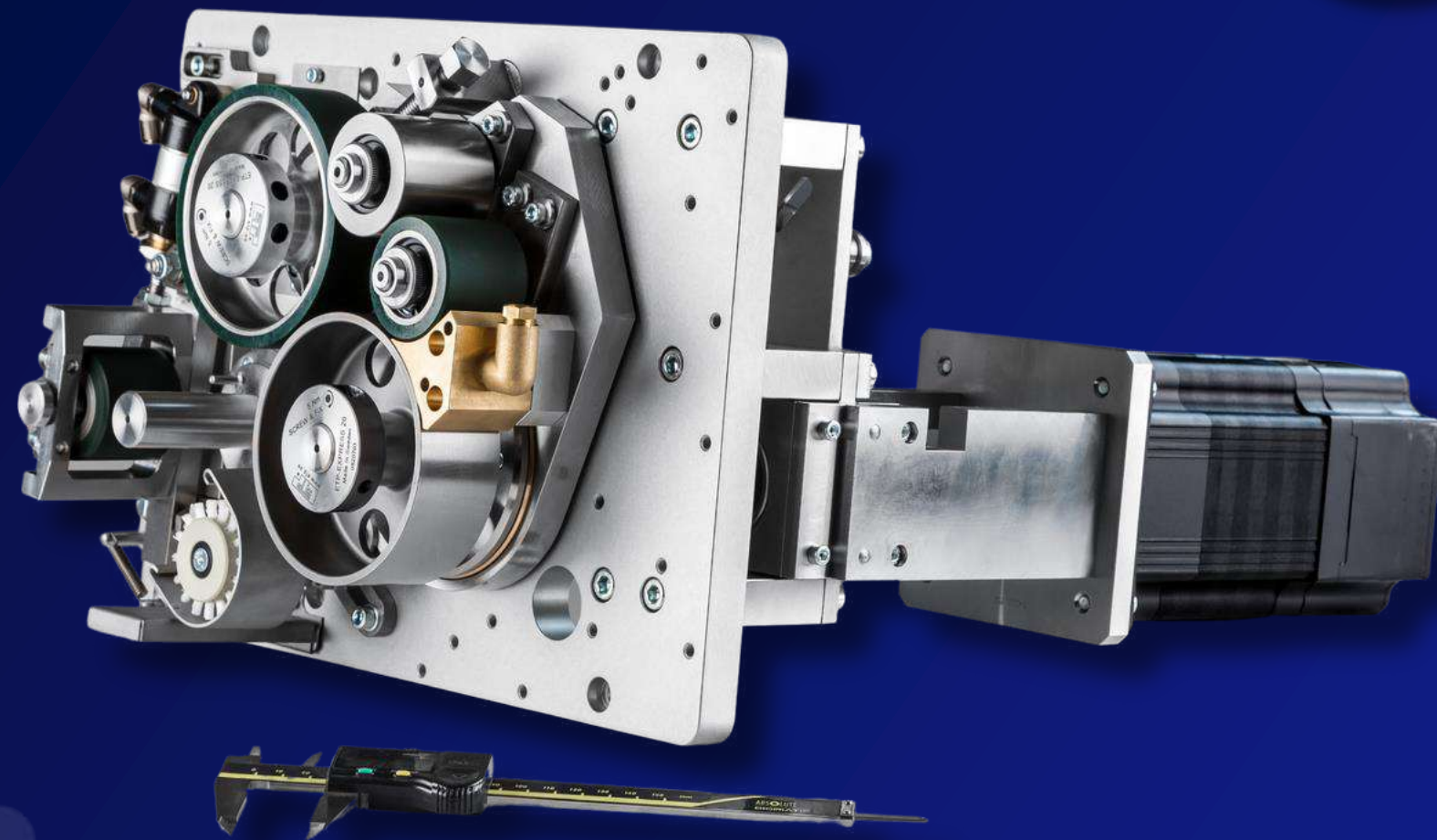








Assemblies





Future developments

We have purchased an area of 3000 m² for **a new production hall.**

Higher productivity (low potential for increasing the number of employees in production).

Training of young employees (students, cooperation with schools).

Development in assembly.

“We love mechanical engineering that pushes the limits of precision.”

***Thank you for your time
spent with our presentation.***

**We will be happy to answer any questions you may have,
please do not hesitate to contact us.**

GENICZECH-M, spol. s r.o.

Vavrečkova 5673

760 01, Zlín

+420 577 525 145

info@geniczech.cz

www.geniczech.cz



GENICZECH  **M**
PRECISION ENGINEERING

30 30th anniversary
1993-2023

www.geniczech.cz

